

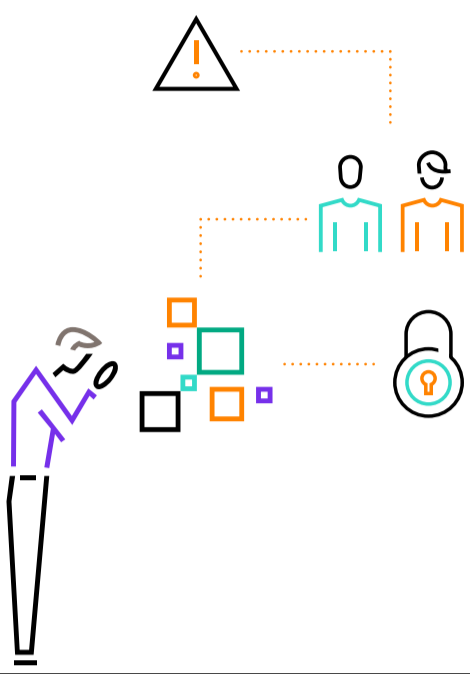
Get the cloud under your control

– HPE GreenLake with Digital Realty

As data volumes grow and workflows are in both the public and private cloud, enterprises often struggle with managing the complex hybrid environment. Time spent on data center management and cloud operations could be better spent on pursuing business objectives.



Why exit on-premises data centers



Aging data center infrastructure

Cost of extending and/or modernizing on-premises facilities is prohibitive.

Dispersed, hybrid workforces

Connected data communities are moving from the data center to the edge.

Lack of skills and resources

It can be hard to attract and retain the skills needed to manage hybrid environments.

Need for security, governance, and compliance

Each country/ industry regulates security and compliance differently.

Data center colocation solutions have become more common but require expertise to optimize both the IT and facilities.

Why use HPE GreenLake with Digital Realty

50%

of new enterprise IT infrastructure will be deployed at the edge in the next year¹

70%

of apps and data still remain outside of the public cloud²

80%

of organizations will have shut down their traditional on-premises data center by 2025³

72%

of businesses plan to add new business locations in the next two years⁴

84%

of companies need global coverage and a secure data exchange from a single data center provider³



HPE with Colocation Readiness Services helps you to collocate your critical network infrastructure away from home campus with integrated services from design to deployment to ongoing capacity management.

Top 5 reasons to choose HPE GreenLake with Digital Realty

01. Geographic availability: With more than 300 Digital Realty data centers in over 25 countries, you can deploy workloads from one rack and beyond at data centers that are purpose-built in the metros where data resides and address the challenges of data gravity.

02. Advanced workload architecture: Take advantage of the entire HPE GreenLake portfolio of over 70 services across 17 different categories, including SAP®, HPC, ML Ops, and AI in a scalable and agile “better than cloud” experience.

03. Security: Protect your infrastructure workloads and data with silicon-to-cloud security and advanced physical security protocols to prevent unauthorized access.

04. Connectivity: The latest data center technologies offering improved transaction speeds, low latency, and direct high-bandwidth connectivity to clouds, carriers, and partners, along with secure multi-cloud access with global SDN-enabled virtual interconnection fabric.

05. Simplicity: One HPE GreenLake contract, point of contact, and invoice encompassing cloud, facility, and management services.

Advance your sustainability goals with leadership from HPE and Digital Realty, the first major data center operator to join the Science Based Target initiative (SBTi).

Reduce energy costs by 30% when you right-size your IT and increase utilization⁵

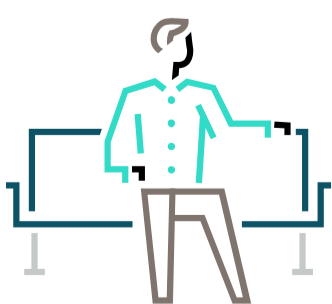
Leverage properties that are all ENERGY STAR® Portfolio Manager benchmarked⁷

Use 100% renewable energy exclusively at Digital Realty U.S. and EMEA facilities⁷



Retire assets responsibly, with 90% of assets recovered from HPE GreenLake platform deals refurbished and remarketed⁶

Partner with an operator committed to reducing Scope 1 and 2 emissions by 68% and Scope 3 emissions by 24% by 2030⁷



Learn more

Contact us to learn how HPE GreenLake can get you cloud agility and the security of on-premises infrastructure, while avoiding the financial and operational overhead of building, running, or expanding your data centers.

Visit GreenLake.HPE.com 

1. IDC, “2020 Data Center Operational Survey—Cloud to Edge Data Center Trends,” August 2020.

2. IDC, “Cloud Pulse 1Q20 Survey findings,” May 2020.

3. Gartner, “The data center is (almost) dead,” August 2019.

4. Global Data Insights Survey, 2022 Report, Digital Realty 2022.

5. The Total Economic Impact™ of HPE GreenLake Cost Savings and Business Benefits with HPE GreenLake, a Forrester Total Economic Impact™ Study Commissioned by HPE, May 2022.

6. 2021 Living Progress Report, HPE.

7. Environmental, Social, and Governance Report 2021, Digital Realty.

© Copyright 2022 Hewlett Packard Enterprise Development LP. The information contained herein is subject to change without notice. The only warranties for Hewlett Packard Enterprise products and services are set forth in the express warranty statements accompanying such products and services. Nothing herein should be construed as constituting an additional warranty. Hewlett Packard Enterprise shall not be liable for technical or editorial errors or omissions contained herein.

ENERGY STAR is a registered mark owned by the U.S. government. SAP is a trademark or registered trademark of SAP SE (or an SAP affiliate company) in Germany and other countries. All third-party marks are property of their respective owners.